

GPS/chartplotter user guide – TD2

The GPS units contains waypoints for some sites that we regularly dive. If you dive a site and find that the marks are not stored, please add and label them. Also, please try and keep the waypoints organised. If you add a temporary waypoint, please delete it afterwards. If you add a permanent waypoint, please label it.

TD2 (the newer, red and black, boat) has a Raymarine Element 9 HV chartplotter, which combines GPS and echosounder functions in a single unit.



The chartplotter on the console of TD2



There is a switch panel on the console below the steering wheel – make sure the 2 switches on the left-hand side are down (on) – these provide power to the radio (VHF) and chartplotter (GPS).

This is the display control panel. The functions are listed below:



Man overboard/waypoint

Home

Menu

Directional pad

Back

OK

Minus

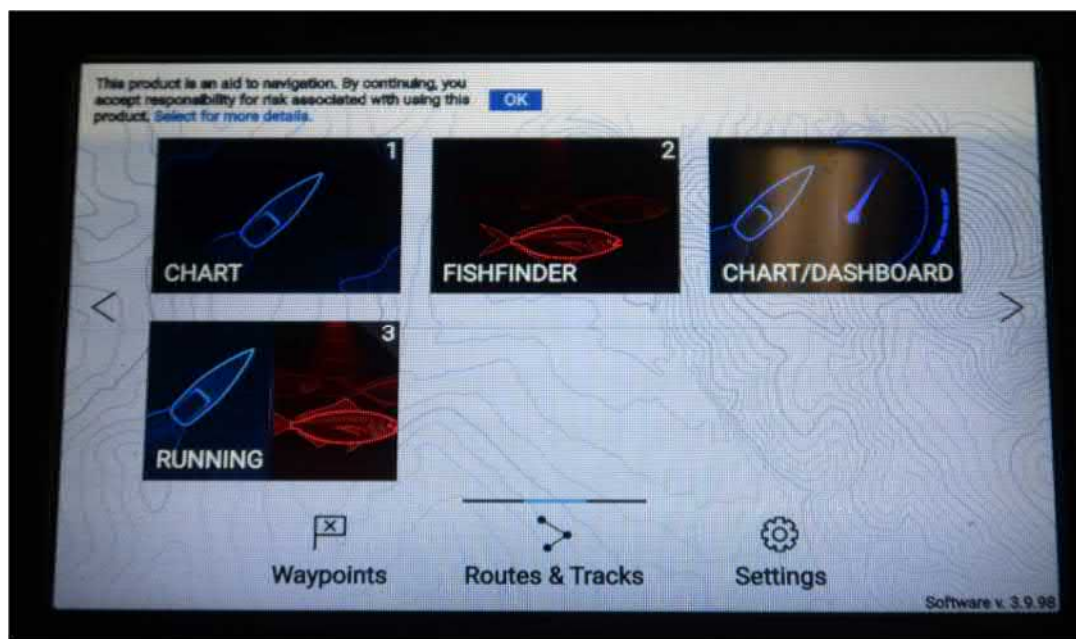
Plus

Quick-launch

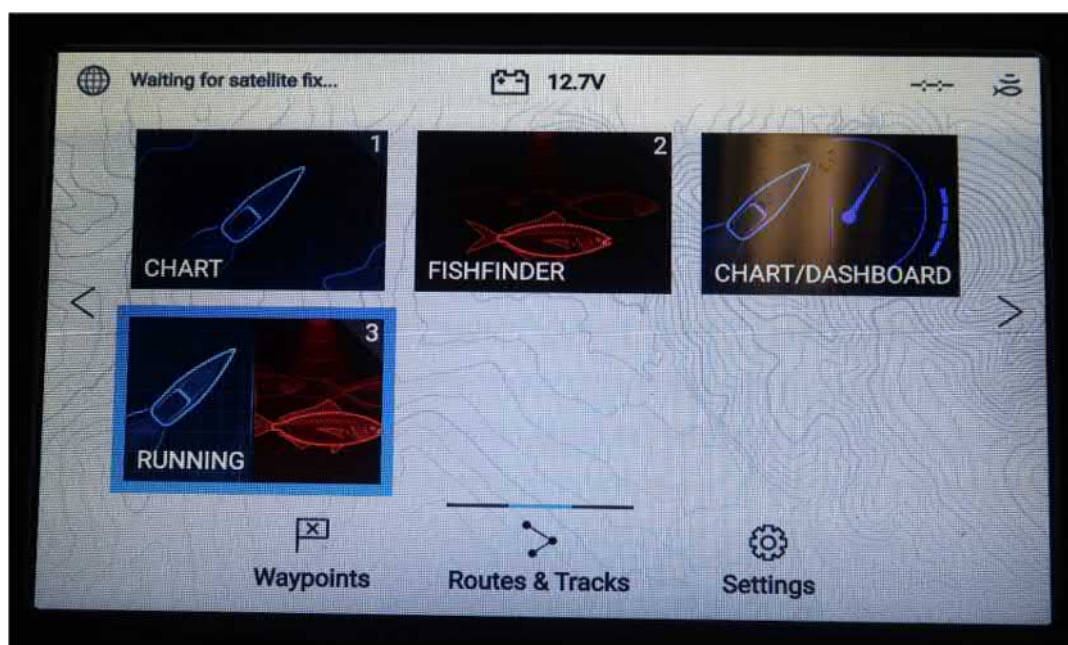
Power



When you first power up the unit this is the screen you will see



After a minute or so it will change to the “home” screen above



The most useful option is the “running” screen which will display the chart and the echosounder side by side

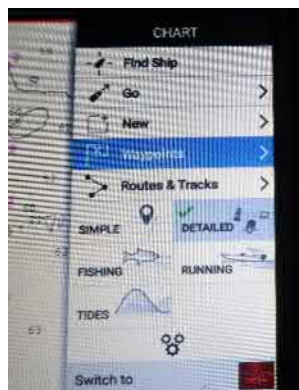


-You can use the directional pad (down button) and the OK button to select this, or simply press button 3 on the quick-launch.



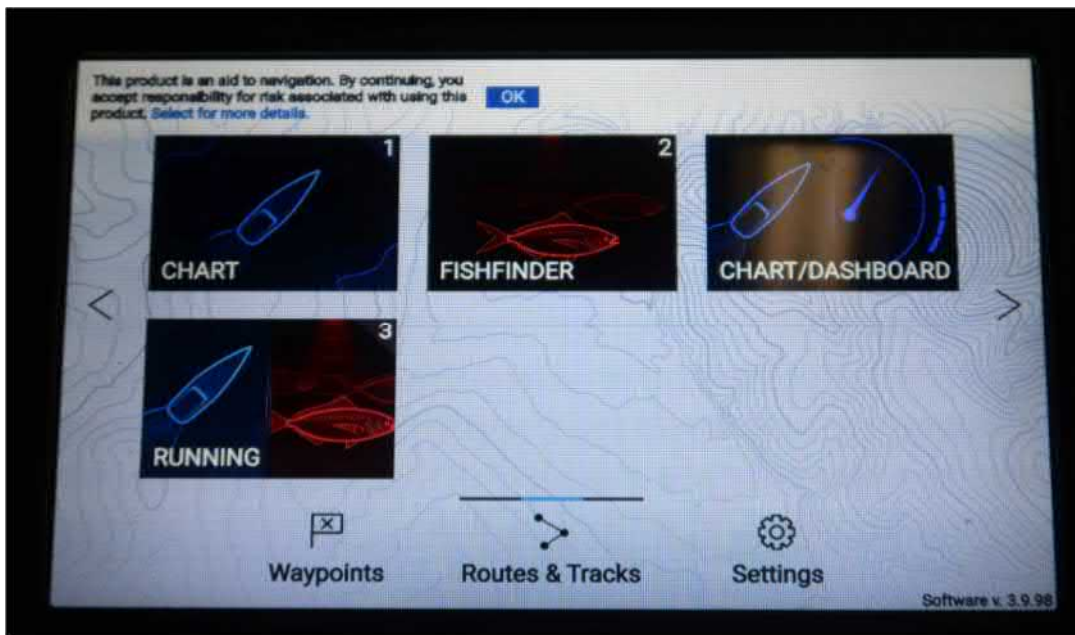
This is what the running screen looks like – don't be concerned if the appearance changes when you are under way, the chart will zoom in and out, but goes back to "normal" as you slow down at the destination

If you want to navigate to an existing waypoint there are several ways to do this. The simplest is to use the menu button and then select "waypoints" (but please don't change the screen settings):





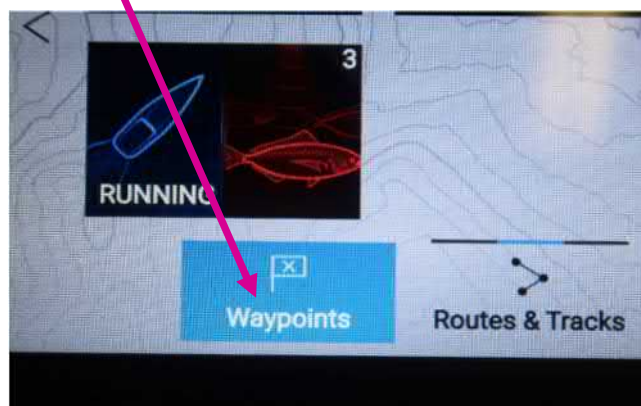
Alternatively, you can return to the home screen (which you can do by pressing the “home” button) and select the “waypoint” button as shown below

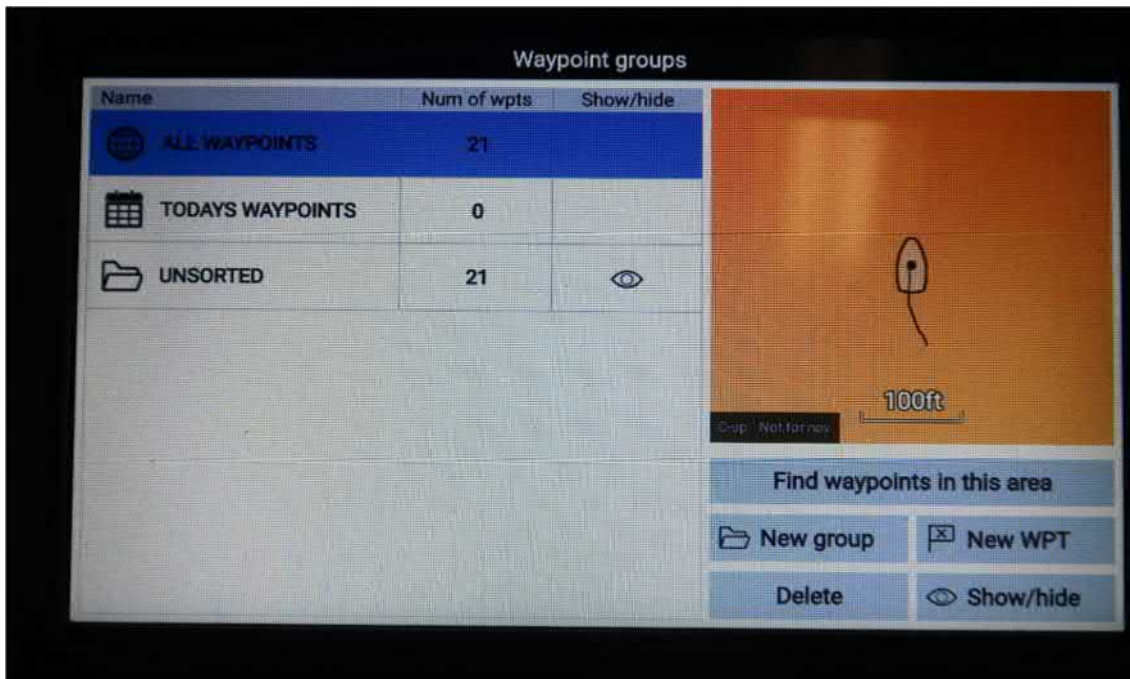


This is the home screen



You can use the directional pad to select the “waypoint” button



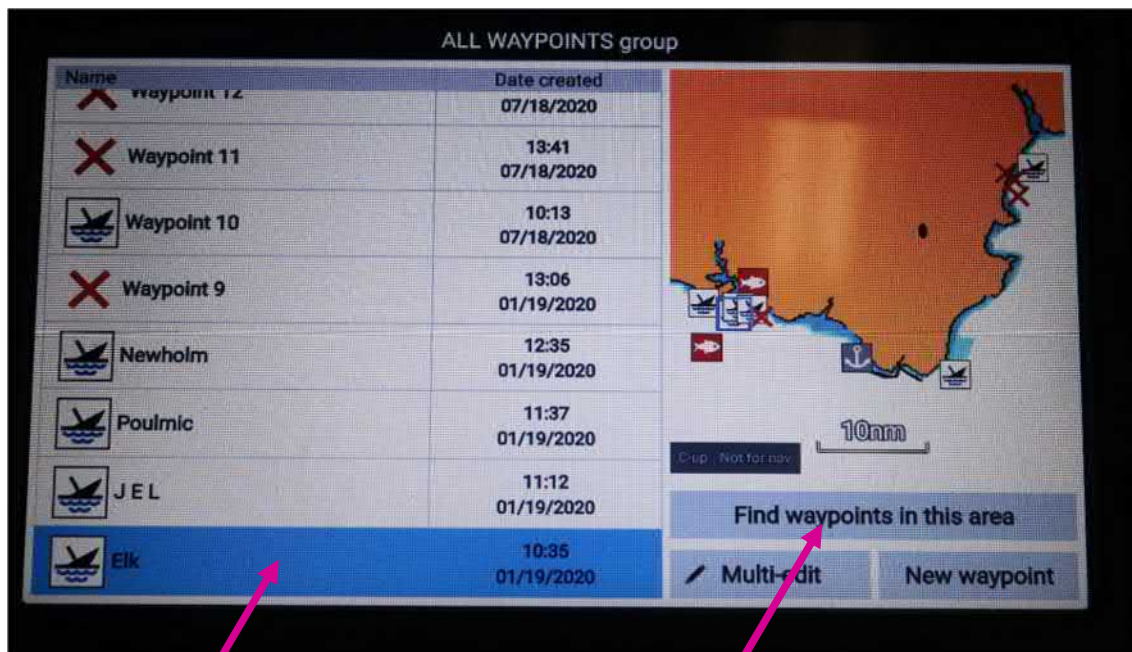


Above is the screen that you will see after pressing the waypoint button

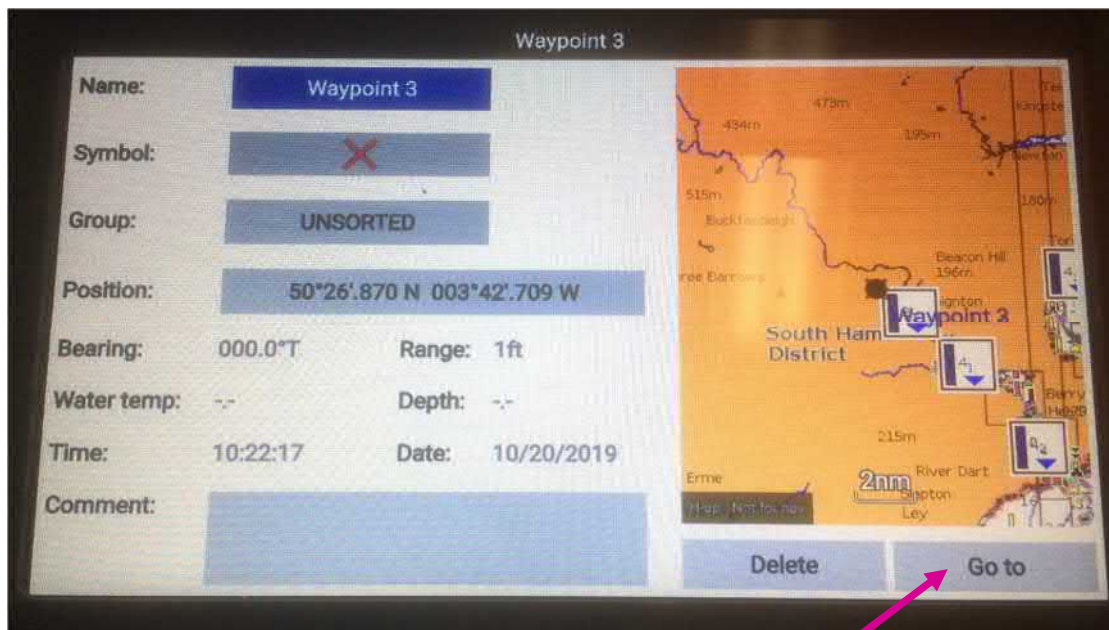
If you press OK at this point you will see a list of all the waypoints stored in the unit – as you can see not all are named!



If you use the direction keys and Ok to select the “down” arrow you can see further waypoints, as shown below

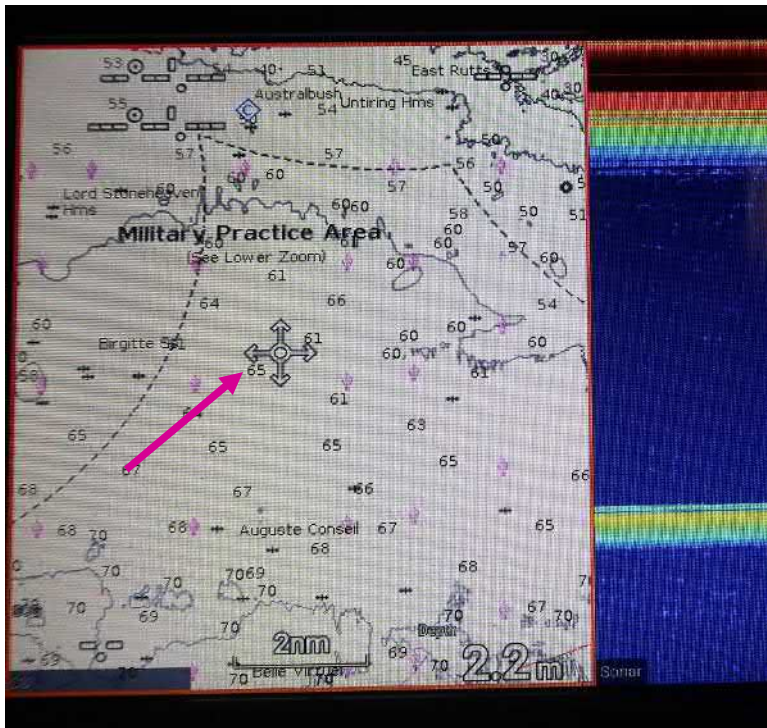


Use the direction pad to highlight the waypoint you want (e.g. Elk as shown above) and press "OK" to select. You can also use the "find waypoints in this area" button to see just those that are in the local area (use direction pad to highlight the "find waypoints" button and then hit OK)

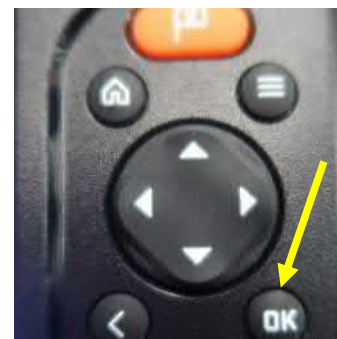
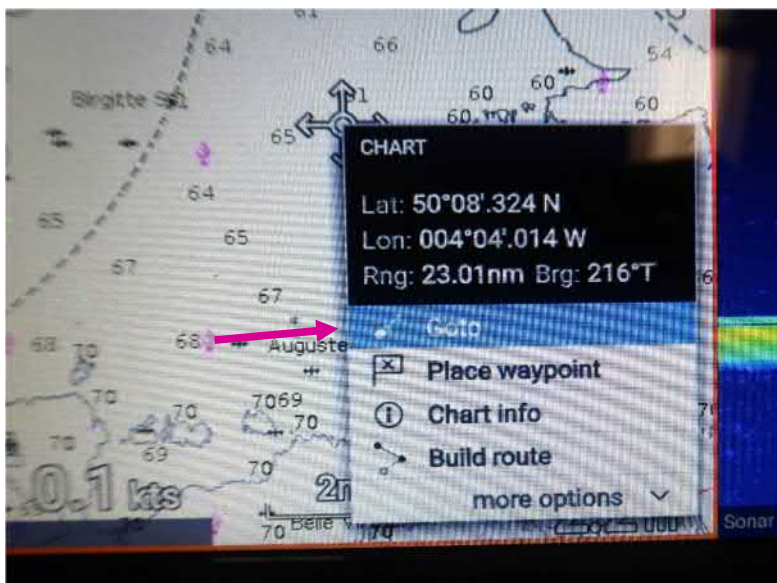


Once you have selected your chosen waypoint you can then navigate to the waypoint position using the "go to" button area (again, use the direction pad to highlight the "go to" and then hit OK)

There is an alternative option to create a route quickly at sea using the “cursor” function – use the direction pad to move the cursor (“cross” below) to where you want to go.



Press “ok” and you will see the screen below:

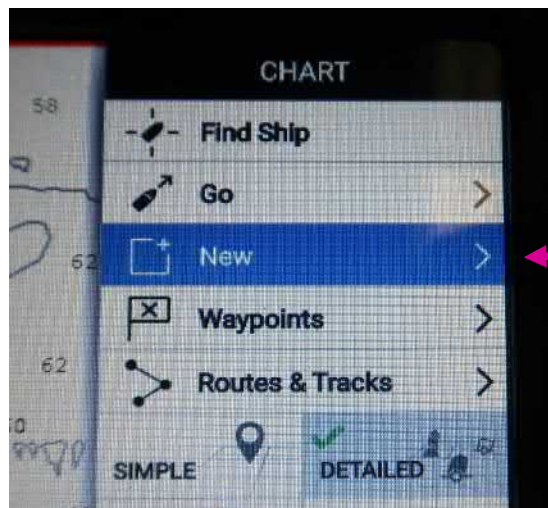


You then simply select the “go to” option to start navigation

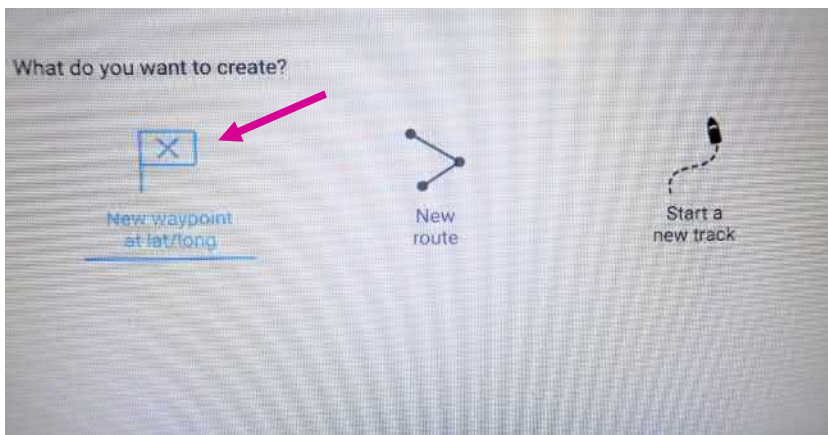
There are several ways to create a new waypoint. The simplest is to use the Man overboard (MOB) button:



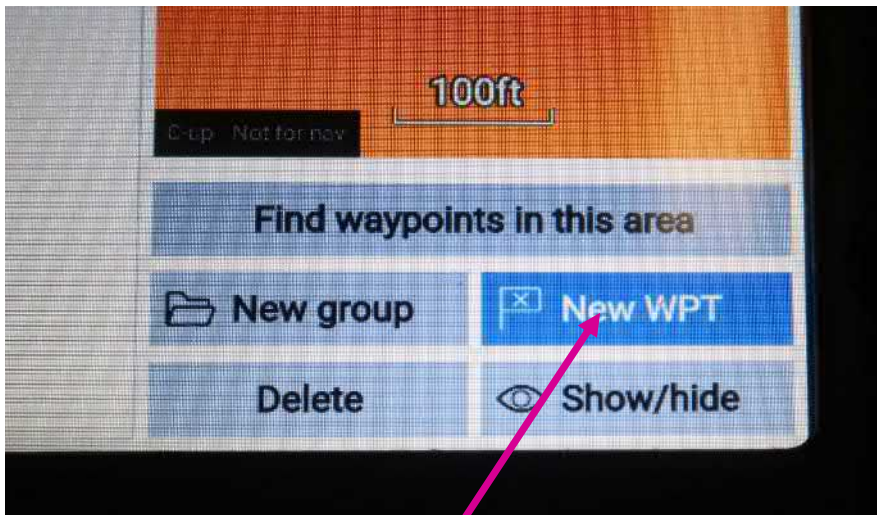
You can also use the menu button and then select “new”:



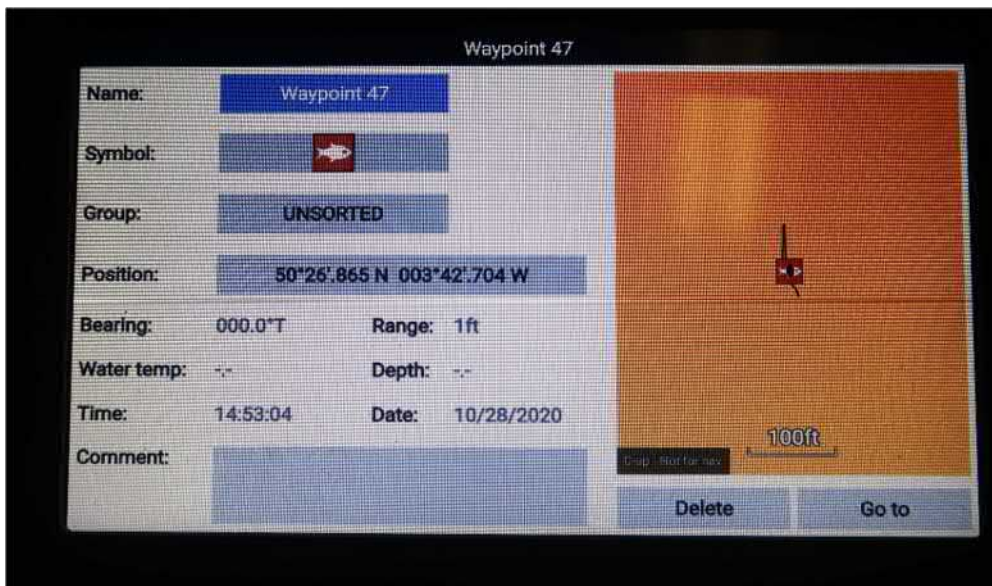
This will bring up the screen below and you select “new waypoint”:



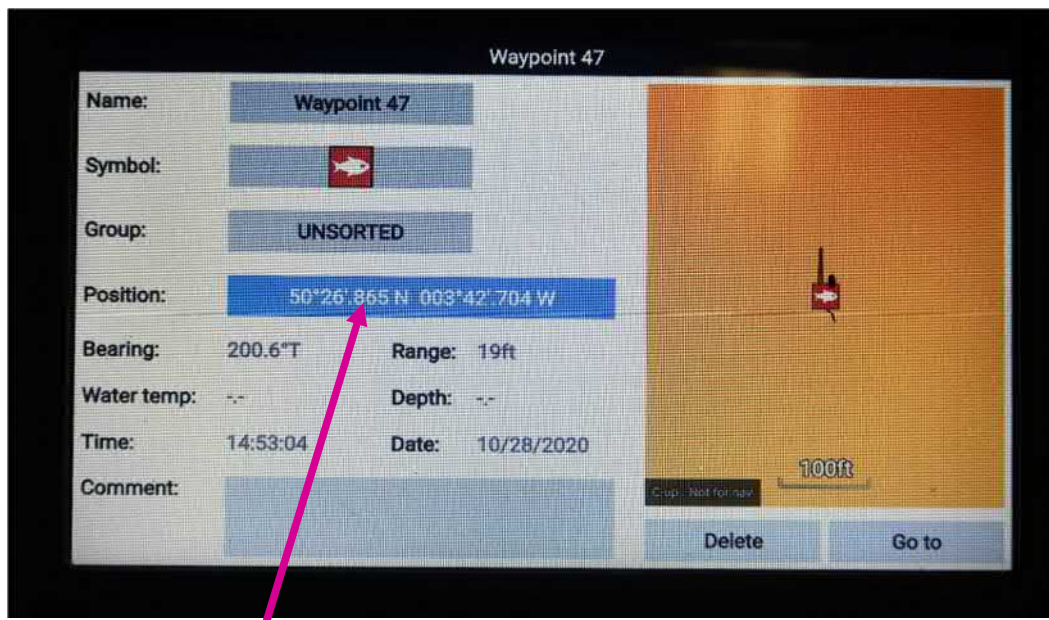
You can also create a new waypoint from the waypoint screen (for example if the site you are looking for isn't listed):



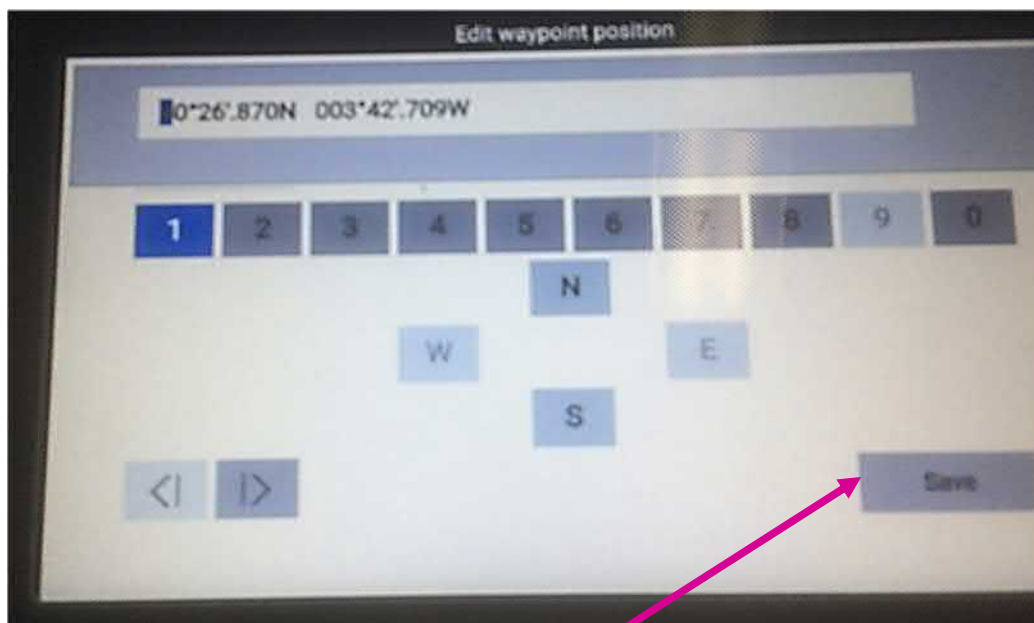
Select this button and press OK



Whatever method you chose, you should then see the screen above – you can use the directional arrows and OK button to select and change the waypoint name, symbol (e.g. a wreck symbol for a wreck site, etc) and position (see below) plus add any notes you might want, such as slack times



If you want to enter a new waypoint that isn't where you are at the moment, the easiest way is to create a waypoint as above and then edit it – selecting OK when the position is highlighted as above will bring up the screen below which will then let you change the position to what you want

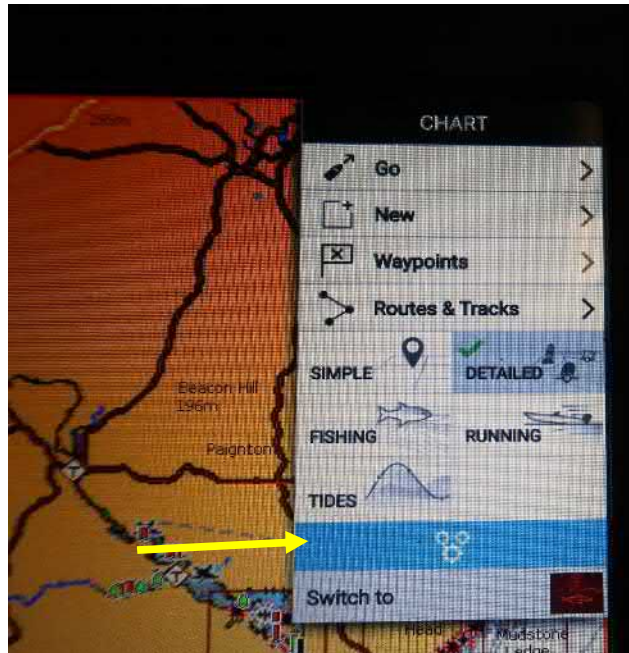


Don't forget to "save" after making any changes!

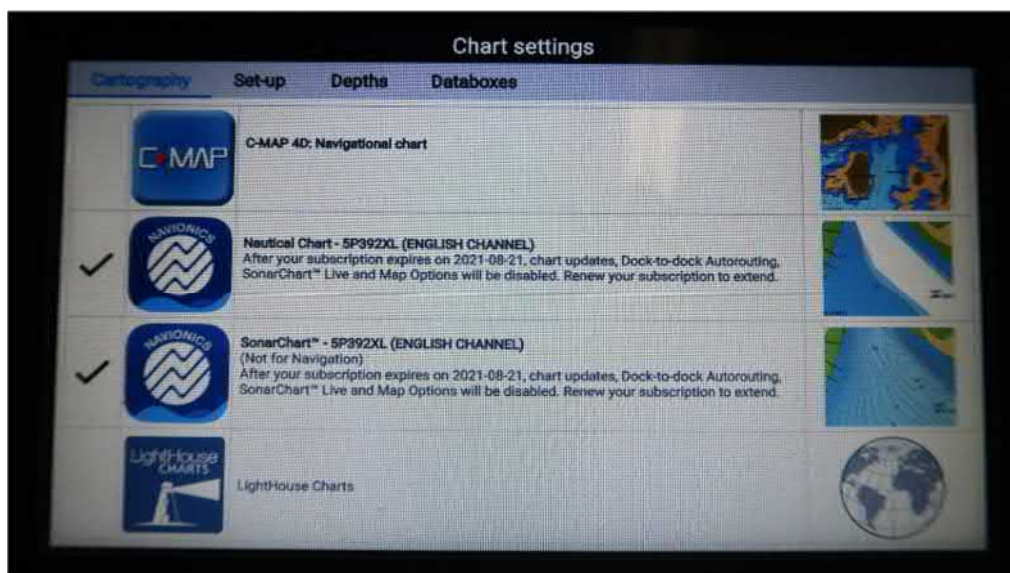
The chartplotter is set as standard to “course-up”, i.e. when you are looking at the chart what is ahead of you is at the top of the view and shows where you are going. If you prefer “north-up” such that north is always at the top then you can change that as shown below, but please return the unit to “course-up” when you finish and please, please don’t change any other settings!



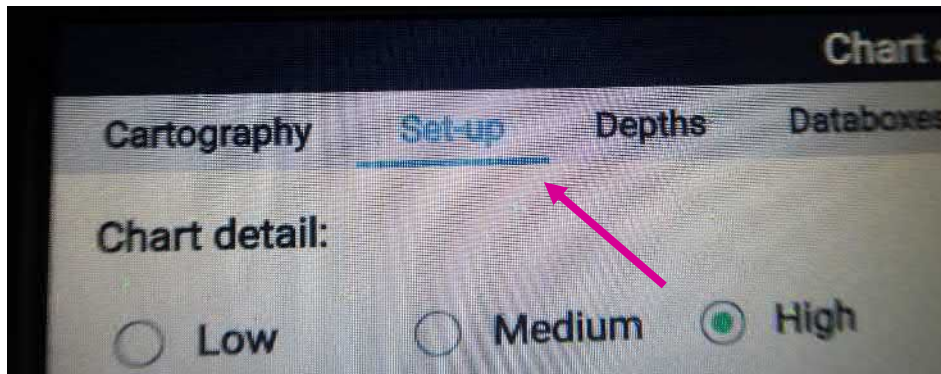
Select “menu” to get the screen below and then use the direction keys to highlight settings and press “ok”



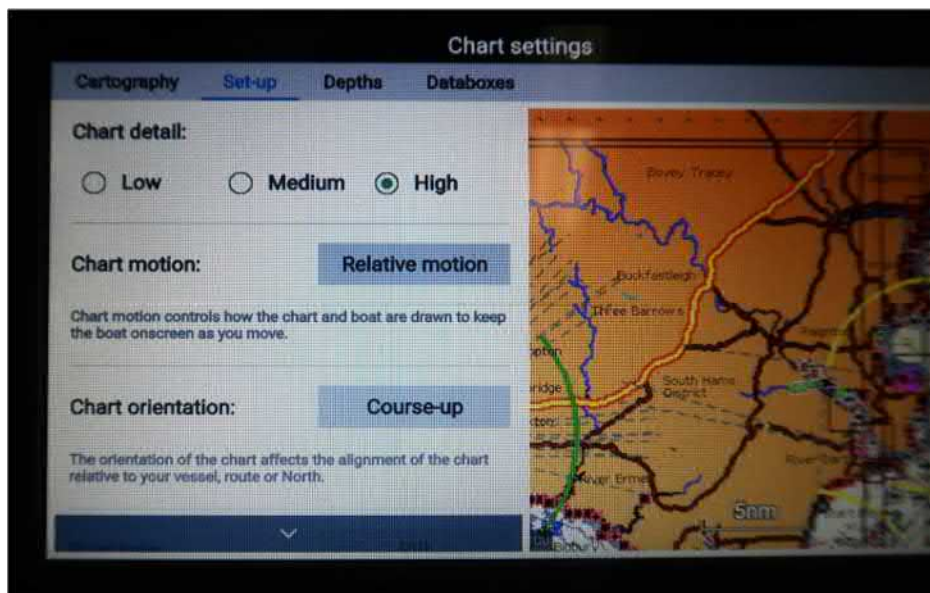
You then get this screen:



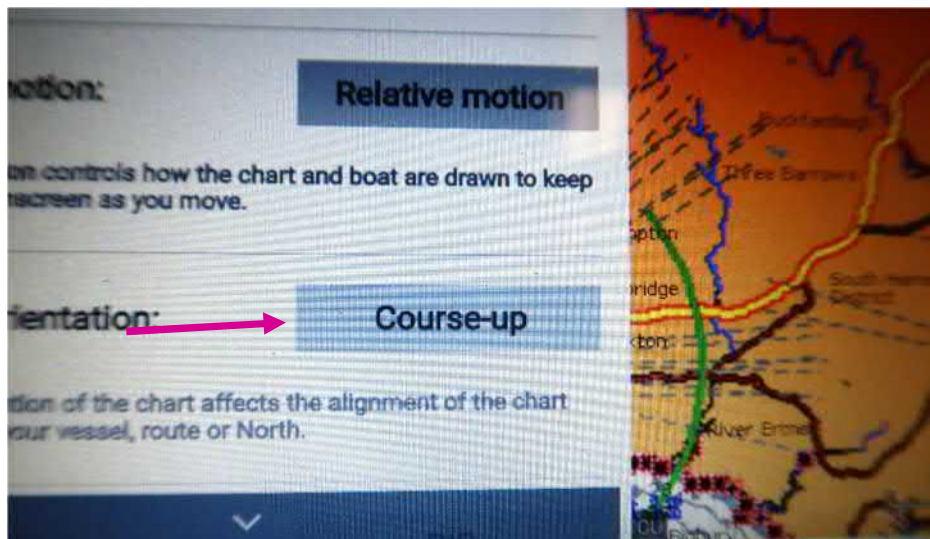
Use the direction keys to select “set-up” and press “ok”



This will bring-up the screen below:

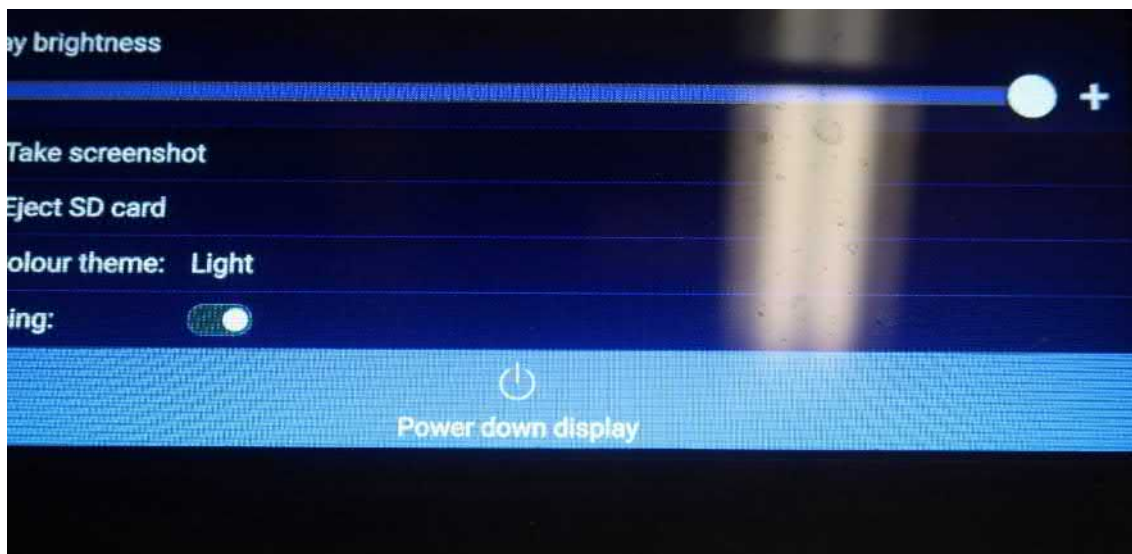


Go to “chart orientation” and change “course-up” to “north-up”:





At the end of the day, please power down the unit by pressing and holding the power button



You will see this screen – use the down arrow to highlight “power down display” as shown above and press “OK” to switch the unit off