

GPS/chartplotter user guide – TD1

The GPS units contains waypoints for some sites that we regularly dive. If you dive a site and find that the marks are not stored, please add and label them. Also, please try and keep the waypoints organised. If you add a temporary waypoint, please delete it afterwards. If you add a permanent waypoint, please label it.

TD1 (the older, orange, boat) has a Humminbird1197c Combo chartplotter, which combines GPS and echosounder functions in a single unit.



The chartplotter on the console of TD1



There is a switch panel on the console below the steering wheel – make sure the 2 switches on the right-hand side are down (on) – these provide power to the radio (VHF) and chartplotter (GPS).

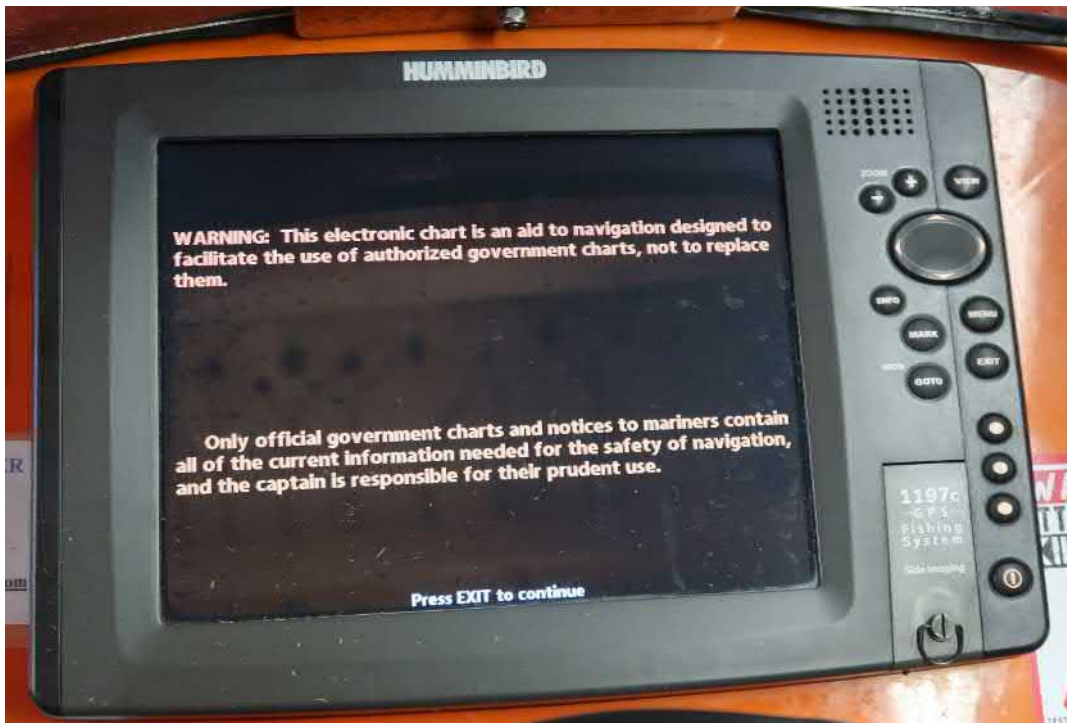
This is the display control panel. The functions are listed below:



Press the power button to start the unit



When you first power up the unit this is the screen you will see



After a few seconds or so it will change to the screen above



Press the “exit” button

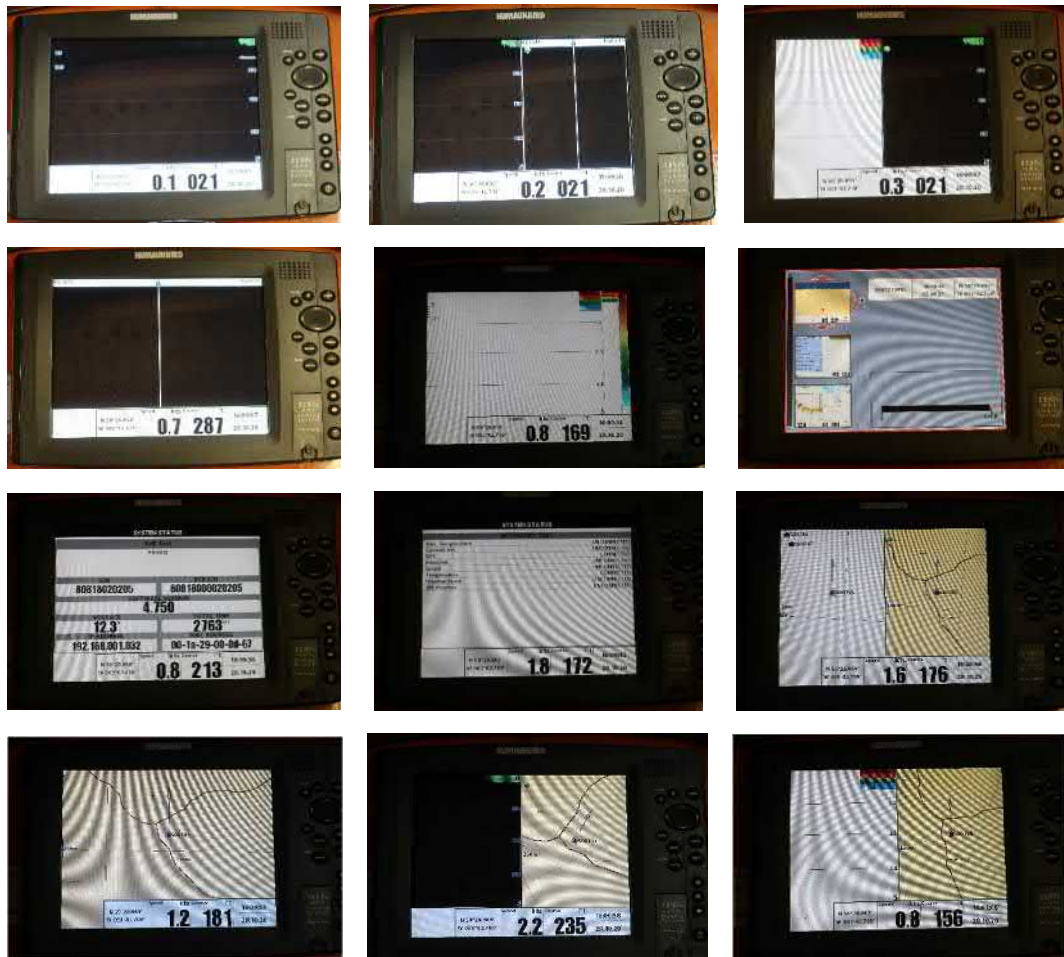


Initially you will get a blank screen like the one above as the unit “boots”

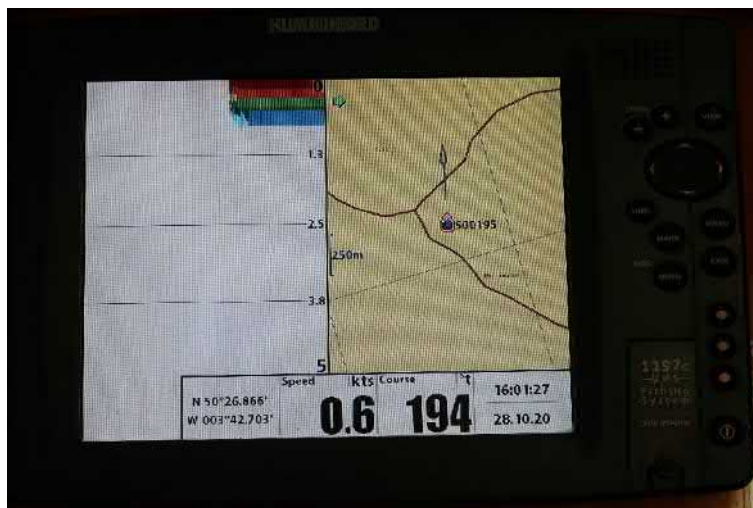


There are two ways of selecting the combined “chart” and “sounder” screens – use the “view” button and press repeatedly to cycle through the screen options until you get the screen you want, or press the bottom shortcut button which should take you straight there (if it hasn’t been changed)

There are the intermediate screens if you use the “view” button option:



The last one is the one you are after – see enlarged view below (don't worry about the screen images, the boat was in the shed when this picture was taken, so the echo sounder wasn't giving a proper trace and the chartplotter was (correctly) just showing land!):

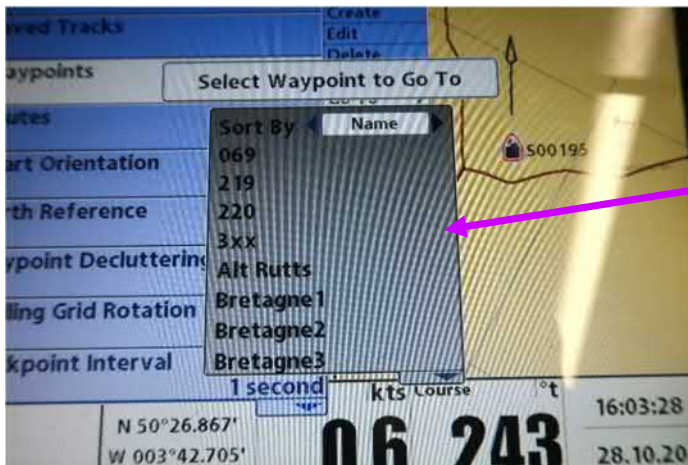
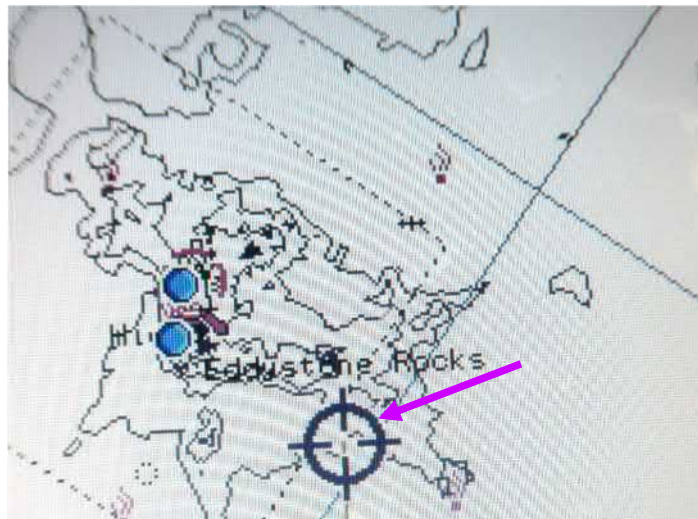


If you want to navigate to an existing waypoint there are various ways to do this.



The simplest option is to use the “GOTO” key – if you are in “cursor” mode (see below) this will create a waypoint at the cursor position and start navigation towards it.

Use the cursor control key to move the cursor to where you want to go and press “GOTO”

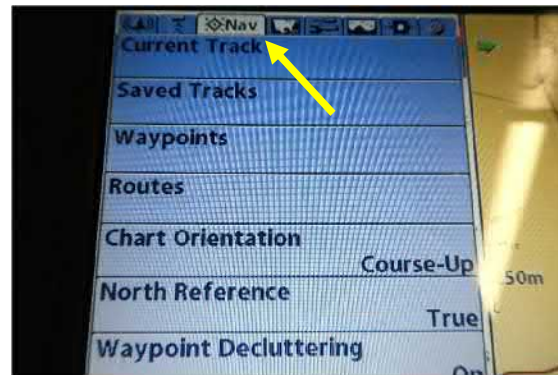


If cursor mode is not active (i.e. if you have the chart displayed and haven't touched the cursor buttons) then pressing the GOTO key displays the list of saved waypoints and you can select the one you want

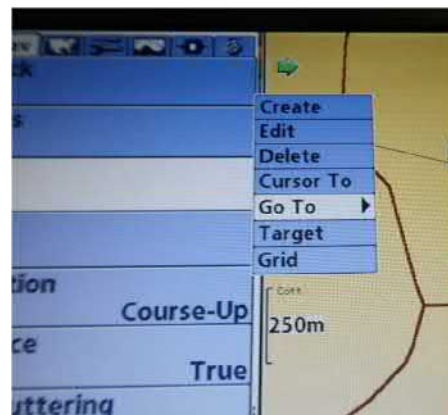
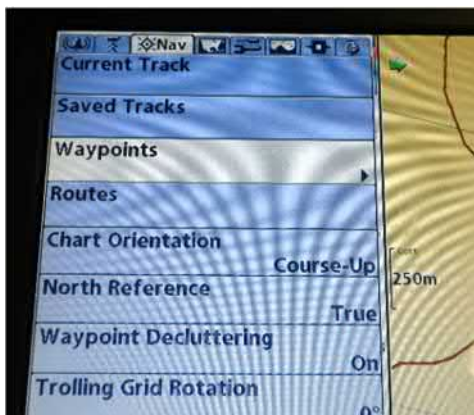
You can also access the waypoints via the menu button – press this button twice to bring up the screens below (left view is first press and right view is second press):



Then use the cursor button right arrow to move across to the “nav” screen:



Scroll down to “waypoints” and use the right arrow to bring up the options menu:



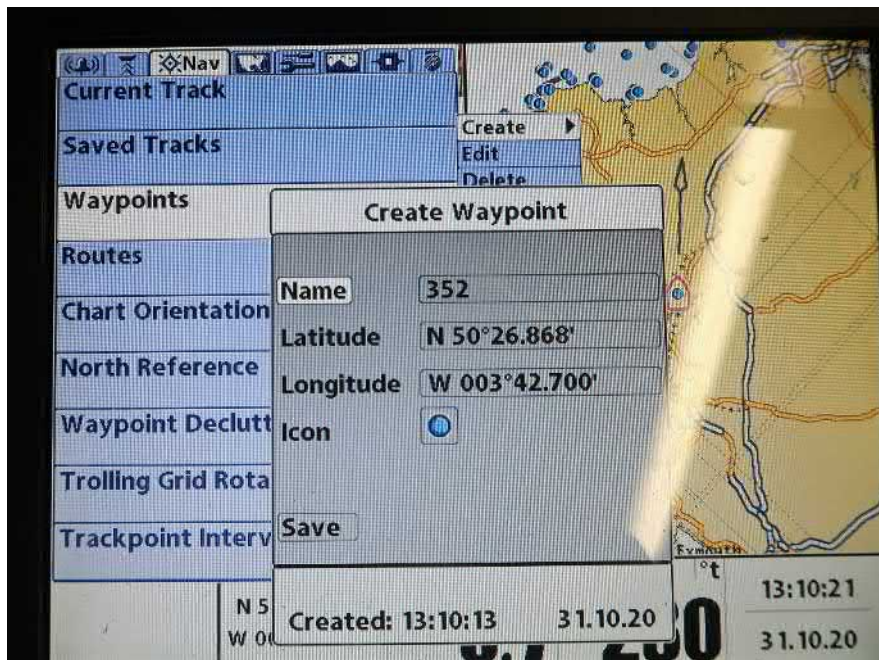
This will allow you to access the waypoint list seen above – this is useful for entering new waypoints while still onshore and also for checking what waypoints are already in the unit – you can also use this screen to select “go to” as shown above, which is useful if you have just entered a new waypoint and want to navigate to it (see below)



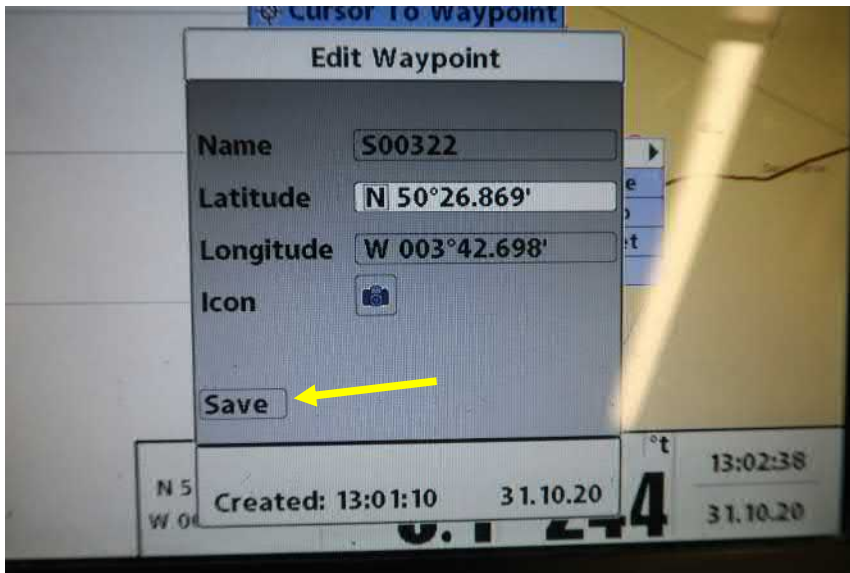
If you want to create a new waypoint you can just press the "Mark" button (this will be at the current boat location unless you are in "cursor" mode in which case it will be created at the cursor location as described above)



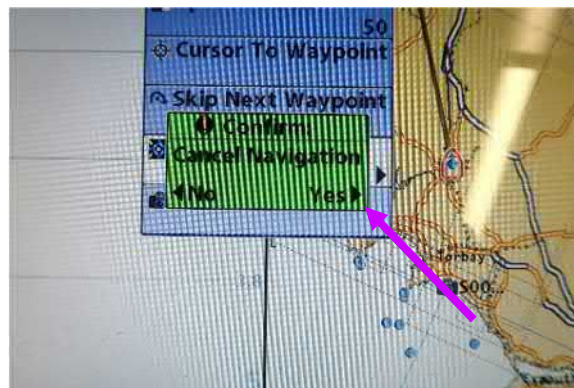
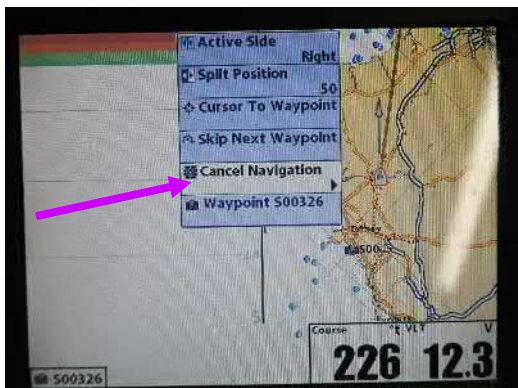
Another way to create a new waypoint is using the menu buttons described above:



You can then edit this waypoint as required, but don't forget to save any changes!



Once you have transited to your selected waypoint and want to stop the navigation screen press the menu button once and scroll down to “stop navigation” and then use the right arrow on the cursor button to confirm:



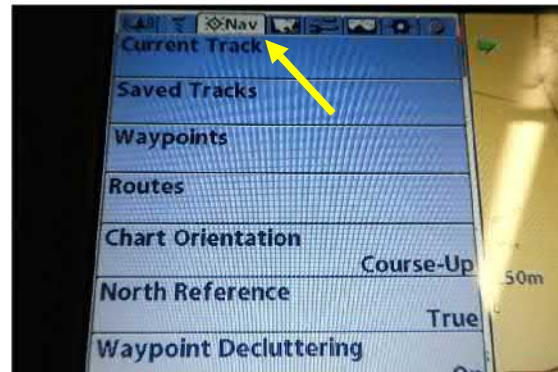
The chartplotter is set as standard to “course-up”, i.e. when you are looking at the chart what is ahead of you is at the top of the view and shows where you are going. If you prefer “north-up” such that north is always at the top then you can change that as shown below, but please return the unit to “course-up” when you finish and please, please don't change any other settings!



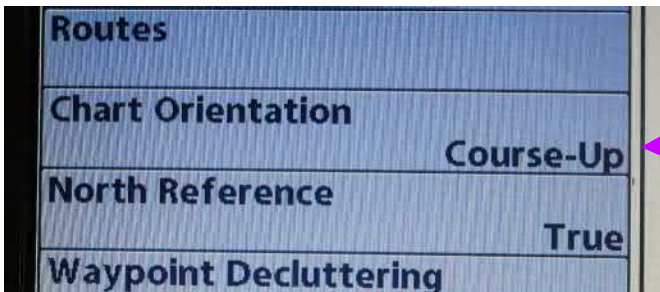
Press the “menu” button twice to bring up the screen below:



Then use the cursor button right arrow to move across to the “nav” screen:



Scroll down to “Chart Orientation” and use the right arrow to select “North-Up”



At the end of the day, please power down the unit by pressing the power button - you will see this screen – just hold down the power button until the unit switches off

